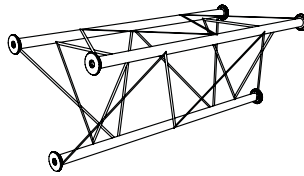


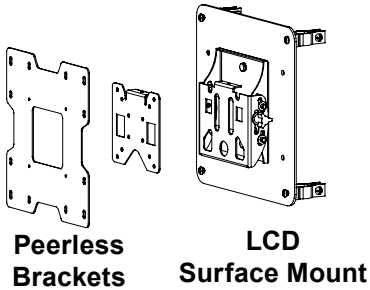
Assembly Instructions

LCD Surface Mount AAU14



SNAPtruss®

PAT.US 4776721



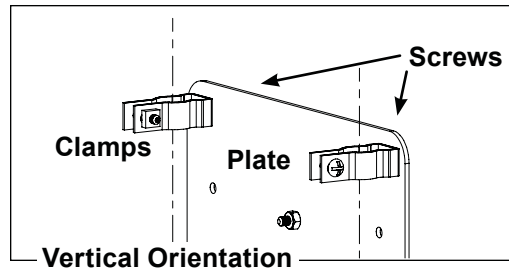
Peerless
Brackets

LCD
Surface Mount

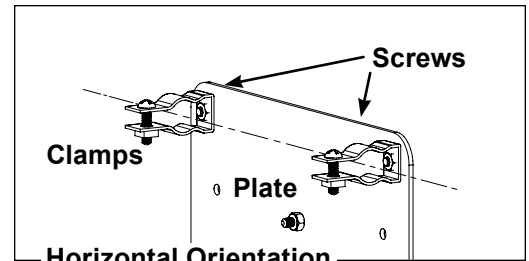
Step 1

Configure the **Clamps** on back of **LCD Surface Mount Plate** for connection in **Vertical** or **Horizontal Orientation**.

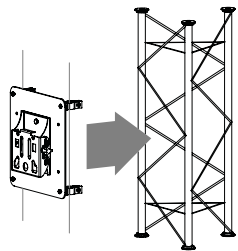
To reconfigure Clamp orientation, loosen **Screws** that attach the **Clamps** to the **Plate**, rotate Clamps in orientation needed as shown below and re-tighten Screws.



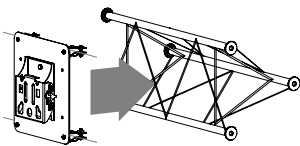
Vertical Orientation



Horizontal Orientation



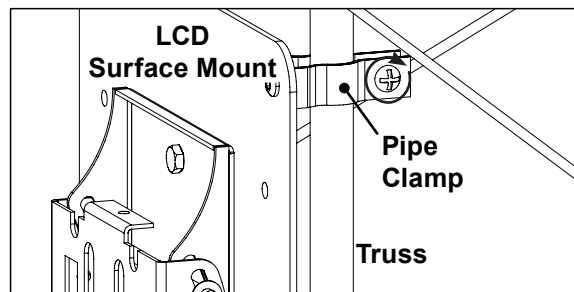
Vertical Orientation



Horizontal Orientation

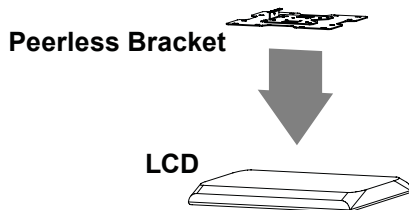
Step 2

Connect the **LCD Surface Mount** to **Truss** at desired location securely with attached **Pipe Clamps**.



Step 3

Connect the appropriate **Peerless Bracket** to your **LCD** following instructions in Peerless Installation and Assembly documentation provided by manufacturer.

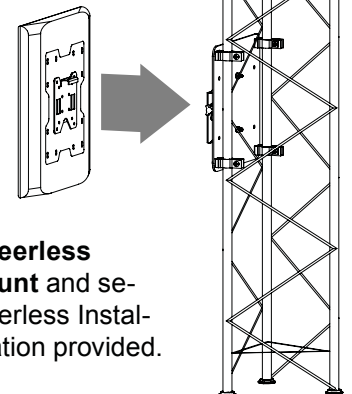


Peerless Bracket

LCD

Step 4

Hang your LCD with attached **Peerless Bracket** onto **LCD Surface Mount** and secure following instructions in Peerless Installation and Assembly documentation provided.



52079 - 07/30/07



Member

7316 Aspen Lane North
suite 300
Minneapolis MN 55428-1109

e mail: info@interlockstructures.com
web: www.interlock.biz

INTERLOCK®

Interlock Structures International, Inc.

voice: 763.425.1464
800.468.1497
fax: 763.425.8205