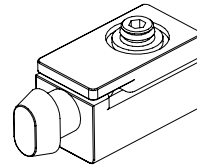


Assembly Instructions

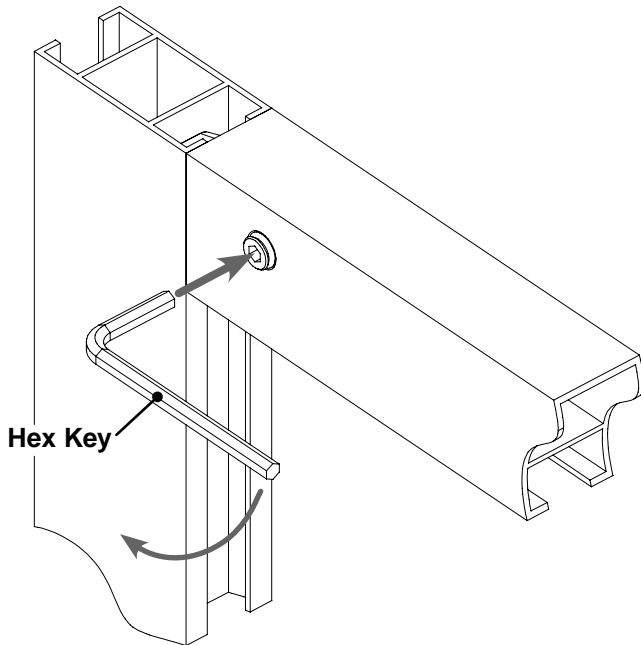
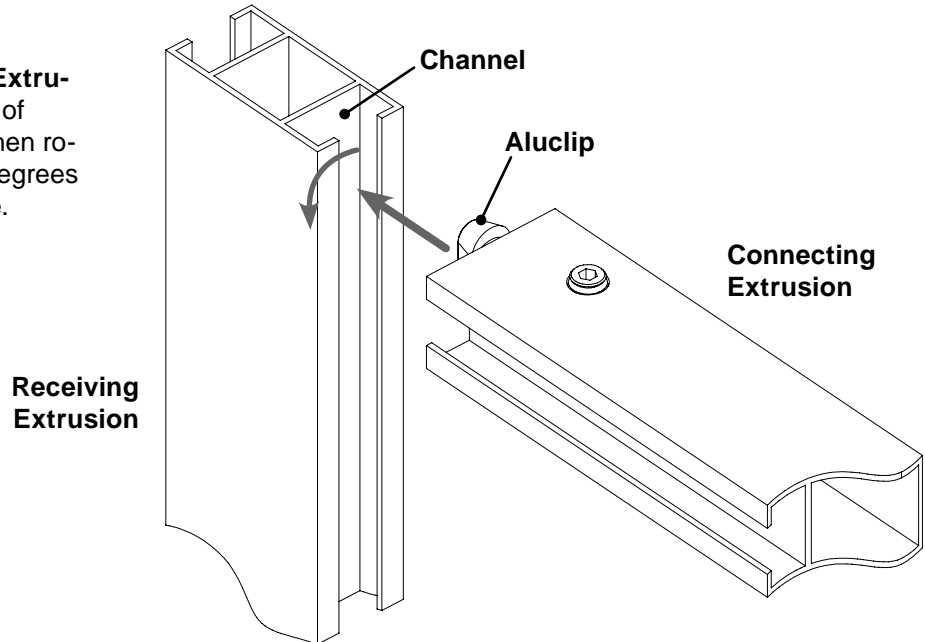
Connection Detail
Aluclip



PORSA

Step 1

Start by inserting the **Connecting Extrusion** with **Aluclip** into the **Channel** of **Receiving Extrusion** as shown. Then rotate the Connecting Extrusion 90 Degrees until profiles are aligned and square.



Step 2

Then tighten the Aluclip with supplied the **Hex Key** as shown.

Note: Extrusion shown may or may not match your current extrusion set.
Connection is made in the same manner for all extrusions with channel.

41818 - 04/05/07



Member

7316 Aspen Lane North
suite 300
Minneapolis MN 55428-1109

e mail: info@interlockstructures.com
web: www.interlock.biz

INTERLOCK[®]
Interlock Structures International, Inc.

voice: 763.425.1464
800.468.1497
fax: 763.425.8205